

Troy Products Consoles

- Made from 11 gauge steel, these consoles are powder coated black making it resistant to scratches and weather
- Two Piece adjustable units allows front end only or entire console to be raised 8 inches Ideal for deep radios. Affordable
- Includes heavy duty hump mount floor bracket for No-Holes mounting
- Solid one piece steel equipment brackets and filler plates are included to fill and cover the entire console
- Choose from 12, 14, 16 or 18 inch models .
- A variety of accessories are available to completely customize your console to fit your operational needs

MODELS

- CC-C12—Holds 12 inches of faceplates. Floor mount and faceplates are included
- CC-C16—same as above with room for 14 inches of faceplates
- CC-C18—same as above with room for 18 inches of faceplates



CC CC-C12	\$223.00
CC CC-C16	\$247.00
CC CC-C18	\$340.00

Troy Product Angled Consoles

CC CC-C05	\$171.00
CC CC-C04	\$209.00
CC CC-C03(F)	\$374.00



- Angled series, enclosed consoles are designed for vehicle with bench seat applications and have two heights for either cars, SUV's or Trucks Available in 7 or 10 inches of room
- Choose from a variety of accessories such as cup holders, microphone clips and map lights to customize the usage to your standards

MODELS

- CC-C05—Holds 7" of faceplates (included) or filler plates
- CC-C04—Holds 10" of faceplates (included) or filler plates
- CC-C03(F) - Holds 11" of face plates, floor mount and adapter included for high profile mount for SUV's & vans

Troy Products Computer Mounts

2-CMP CMP-LAP98 LAP98-01	\$112.00
2-CMP CMP-LAP98 LAP98-02	\$ 90.00
2-CMP CMP-LAP98 LAP98-03	\$112.00

Powder coated steel computer mounts designed to mount in front of the console on the floor plate

- 2-CMP-LA98-01—Universal laptop mount
- 2-CMP-LAP98-02—Solid base laptop mount
- 2-CMP-LAP98-03—Pole mount, adjustable from 9 to 12 inches



Troy Push bumpers

PB PB-1	\$159.00
PB PB-LA	\$139.00
PB PB-GB	\$119.00

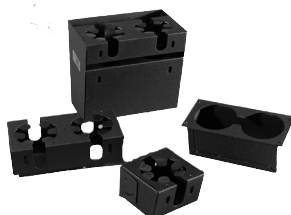


- Available in one piece or two piece units, both are made with high strength steel and are coated in a black powder coated finish
- Easily installed and engineered for police use and increases protection to fenders, grille, and headlights
- Cross support beam ideal for mounting grille lights or speaker system
- Will not interfere with SRS air bag system

MODELS

- PB-1—22 inch push bumper, with cross member
- PB-LA—19.5 inch push bumper, with cross member
- PB-GB—16 inch push bumper

You must specify year, make and model of vehicle when ordering



Please call for prices and availability of all Troy products and accessories. Trained personel will be happy to assist you with your order and to answer any questions you have.

Jotto Desk Console

- Made with 11 gauge powder coated steel
- Includes heavy duty steel humpmount bracket for easy No-Holes mounting
- Steel one piece equipment brackets make a tight fit with standard filler plates
- Available in a variety of sizes.
- Choose from 9", 12" and 14.5 inch models that includes mounting kit, equipment brackets and filler plates
- Choose from a variety of accessories such as cup holders, microphone clips and map lights to customize the usage to your standards

MODELS

- SC-SS—9" of equipment space with mounting kit, equipment brackets, and filler plates
- SC-M—Same as above with 12" of equipment space
- SC-L—Same as above with 14.5" of equipment space

SC SC-SS	\$180.00
SC SC-M	\$203.00
SC SC-L	\$225.00
Please specify vehicle and equipment make and model.	



Jotto Desk Contour Console

- Unique and one of a kind this console is fabricated to custom fit a Crown Victoria or Impala dashboard underside
- Reduces space used between seats and utilizes space under dash that might not have otherwise been used
- Available with or without the option to relocate the factory climate control unit
- Includes all mounting hardware, mounts (no floor mount needed for Impala) All necessary equipment brackets and filler plates

MODELS

- CC-I—Contour console for 2000 & up Chevy Impala with 12 inches of equipment space
- CC-CV01-FPL—Contour console for 1992 to 2002 Ford Crown Victoria with 10 inches of equipment space
- CC-CVCC-01-FPL—same as above with Climate control mounting with 10.5 inches of equipment space

CC-I	\$205.00
CC-CV01-FPL	\$237.00
CC-CVCC01-FPL	\$237.00



We carry a full line of Unity spotlights and accessories.
Please call our Customer Service Department today for specific information regarding your vehicle.



Setina

- Constructed of 14 gauge steel guard plate and 1 3/8" diameter tubing with 1/8 inch wall thickness, heavy duty double extruded aluminum window frame and slide tracks mounted on the inside radius of the framework
- Roll bar uses 1/2 inch foam padding and 10 gauge steel floor mounting brackets

MODELS

- 10-S—3 piece Lexan horizontal sliding window (standard)
- Lower extension panel is separate

10 10-S	\$419.00
Lower Panel	\$ 50.00
All prices listed are for 98-02 Crown Vic or 00 to 02 Impalas	
Call for pricing on other models.	

**Pro-Gard No-Holes Drilled**

- This series of vehicle partitions is constructed of 14 gauge steel, framed with roll bar style 1 5/8 inch structural tubing and padded with 1/2 inch foam.
- Easy No-Holes drilled and no trim cut installation

MODELS

- P2204—Center sliding window with one piece side filler panels & full extension panel
- P2211—Polycarbonate swing down window with one piece side filler panels & full extension

P2204	\$389.00
P2211	\$441.00
Lower Panel	\$ 36.00
All prices listed are for 98-02 Crown Vic or 00 to 02 Impalas.	



Shipping not included.

Setina Push Bumpers

- Available in one piece or two piece units, both are made with either High strength aluminum or steel and are coated in a black powder coated finish
- Easily installed and engineered for police use and increases protection to fenders, grille, and headlights
- Cross support beam ideal for mounting grille lights or speaker system
- Will not interfere with SRS air bag system
- One piece unit come standard with a no holes drilled mounting system

MODELS

- PB100—12" two piece push bumper
 - PB200—Same as above in 16" model
 - PB300—16" one piece push bumper
- You must specify year, make and model of vehicle when ordering

PB100	\$175.00
PB200	\$199.00
PB300	\$165.00
All prices listed are for 98-02 Crown Vic or 00 to 02 Impalas	
Call for pricing on other models	



We offer the full line of Setina products.

**We have a large selection of used partitions in stock.
Please call for current selections and pricing.**

**GO-RHINO**

- Go-Rhino one-piece push guard offers stunning looks at an affordable price
- Easy to install with a no holes drilled mount, designed specific for each vehicle application
- Made from high quality steel, all welded construction
- Comes standard in Black powder coat finish
- Available in Crown Vic / Impala police cruiser model, with or without brush guard extension

5038	\$165.00
5038W	\$165.00
Prices above for Crown Vic or Impala models.	
For Light trucks and SUV's contact us for pricing.	

Full GO-RHINO product line available. Please call.



Quality Installation on all Go-Rhino Products.