

## Signal Vehicle SA500

- 100/200 watt full function siren sets the standard for emergency vehicles
- Selector knob provides, wail, yelp, phaser, radio rebroadcast and stand-by modes.
- Push buttons activate the air-horn and manual phaser tones
- Other features include separate volume controls, noise canceling PA, horn ring, park kill and a backlit controller for easy nighttime operation
- Designed to meet Class A and GSA specifications

### MODEL

- SA500—100/200 watt, full function siren



**SA500 \$195.00**

## Code 3 V-Con

- 100/200 watt siren & light control units are available with wail, Yelp and either Hi/lo or Hyper/Yelp siren tones plus PA and radio rebroadcast
- Light control models have built in relays and seven levels of control, with a 3 level progressive slide switch and four push-on/ push-off auxiliary switches
- All models are back lit for easy night operation
- The V-Con is energy efficient, with solid state technology that offers the best combination of features and value in the industry

### MODELS

- 3672—Full feature siren with Hyper Yelp, PA & Air horn
- 3692—Full feature siren with Hi/Lo, PA & Air horn
- 3672L4—Same as 3672 plus light controls
- 3692L4—Same as 3692 plus light controls



**3672 \$239.00**  
**3692 \$239.00**  
**3672L4 \$349.00**  
**3692L4 \$349.00**

## Code 3 Undercover 3050

- The 3000 Series undercover sirens utilize the rock hard construction of the V-con series siren in an undercover package
- 100 or 200 watt remote unit with separate controller and amplifier unit.
- Standard options include wail, yelp and optional air horn

### MODELS

- 3000—100 /200 watt unit with wail and yelp tones only
- 3050—100/200 watt unit with wail, yelp, and air-horn

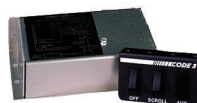
**3000 \$129.00**  
**3050 \$139.00**

## Code 3 Undercover 3920

- Compact siren that has design features that are unmatched in an undercover siren unit
- Features include 100 watt output, Wail, Yelp, Hyper Yelp and air-horn tones, Instant-On, output short circuit protection, & a super compact size

### MODEL

- 3920—100 watt siren with scroll through siren and air-horn tones



**3920 \$131.00**  
**3050 \$145.00**

## Sirens

### Federal Signal MS4000

- Redesigned with new microprocessor technology for increased dependability and economy
- Compact and undercover models available; both include standard wail, yelp, priority and air horn tones
- Two rugged switches control all siren functions
- Meets Class A standard when used with any 100 watt Federal speaker
- Trim enclosure, simple external wiring and side bracket mount mean fast & easy installation

### MODELS

- MS4000—100 watt compact siren with wail, yelp, priority and air horn
- MS4000U—100 watt undercover siren with wail, yelp, priority and air horn

**MS4000 \$125.00**  
**MS4000U \$139.00**



### Whelen 295HF100

- 100 watt "hands Free" siren with 6 functions that include wail, yelp, piercer, radio rebroadcast, noise canceling PA and manual "hands free"
- Hands free option allows you to turn off and on all three siren tones without removing hands from the steering wheel
- Adjustable microphone and radio rebroadcast volume controls
- Silent self-diagnostic indicator of siren or speaker failure standard
- Adjustable backlighting in soft LED non-glare green
- Over/Under voltage protection and Input polarity protection
- Adjustable bail bracket

### MODEL

- 295HF100—100 watt hands-free siren w/ PA



**295HF100 \$239.00**

### Able 2 Warble/Whoop (Powercall Style)

- The Warble/Whoop features the distinctive siren sounds of the old GE Powercall style sirens with the upgrade to 100 watts and current microprocessor technology
- Streamlined and compact amplifier fits in vehicles with minimal room under the dash. Also available in an undercover version with remote amplifier and single double throw switch
- Illuminated power and mode selection switches are easily operated and are clearly visible
- Solid state components provide years of dependable service

### MODELS

- 30.2330—Compact dash mount 100 watt Warble siren
- 30.2220—Undercover remote 100 watt Warble siren

**30.2330 \$155.00**  
**30.2220 \$155.00**



**Don't see what you want?**  
**Just ask and we will try our**  
**best to get it for you!**

### Whelen Power Air-Horn

- 100 watt air horn tone to inexpensively supplement your car horn
- Can be wired remotely to the horn ring of the vehicle or to a (customer supplied) momentary switch
- Sturdy amplifier housing mounts in the trunk, under seat or any dry application
- Also available with PA feature with a high gain microphone and adjustable volume control

#### MODELS

- PAH112—100 watt Power air-horn
- PAP112—100 watt Power air-horn with PA
- PAPEXT15— Optional 15 ft extension cable for PAP112 microphone



PAH112	\$120.00
PAP112	\$139.00
PAPEXT15	\$ 13.50

### Whelen SA314

- Just over 3 inches deep this 100 watt, all weather, noncorrosive aluminum housing is available in a natural or black epoxy coated finish. A rugged composite Nylon model is also available
- The SA314 Projector series has a field replaceable driver and diaphragm
- Truer tone quality and wider / higher frequency response than speaker of comparable size
- Compact size is ideal for concealed installations in any type of vehicle—speaker and bracket are sold separately, choose style of speaker and appropriate bracket
- 2 year standard warranty

#### MODELS

- SA314A—100 watt speaker, natural aluminum finish
- SA314B—100 watt speaker, aluminum with black epoxy coated finish
- SA314P—100 watt speaker, nylon composite black, PLUS bracket
- SABKT1—Universal bail bracket
- SABKT2—Bracket for 98 plus Ford Crown Victoria
- SABKT3—Bracket for 00 plus Chevy Impala
- SABKT4—Bracket for 95 to 01 Ford Explorer
- SABKT5—Bracket for 00 Chevy Tahoe or Suburban
- SABKT6—Bracket for 98 to 00 Chevy S-10 Blazer
- SABKT7—Bracket for 98 to 01 Dodge Intrepid
- BKGBL—Bracket for 92 to 99 Chevy Tahoe or Suburban

SA314A	\$171.00
SA314B	\$180.00
SA314P	\$159.00
SABKT or BKGBL	\$ 19.00

Please specify specific model number of speaker and mounting bracket when ordering. These units sometimes work well in other vehicle applications.



### Whelen X-Ecutor

- Single speaker system that is louder than any other single emergency vehicle siren, mechanical or electrical and draws only 10 amps
- Standard features include true mechanical siren tones plus brake and air horn tones. Other features include a full menu of electronic siren tones plus, PA, radio rebroadcast, Traditional Bell, air horn and Grover Air Horn Tones
- Start up and run the X-ecutor with only 10 amps
- X-Ecutor can be mounted in pedestal style or flush mount in the bumper or body panel
- A surface mount or flush mount control head is available
- X-Ecutor Jr. can be used with seven different Whelen speakers. Ideal for ambulances, rescue, or law enforcement and command vehicles

#### MODELS

- X1PED—Mechanical Siren, Brake and air-horn—Pedestal mount chrome housing (Customer must supply switches)
- X1FM—Same as above in flash mount chrome housing
- X2PED—Same as X1PED but includes full function siren, Bell, Grover air-horn and control head (specify surface or flush mount control head)
- X2FM—Same as X1FM but includes full function siren, Bell, Grover Air horn and control head (specify surface or flash mount control head)
- X32314P—Similar functions as X2PED substituting chrome pedestal mount with (2) SA314 slim line composite speakers



X1PED	\$1405.00
X1FM	\$1405.00
X2PED	\$1947.00
X2FM	\$1947.00
X32314P	\$1105.00

**Installation available on all products we sell!**

## Federal Signal Dynamax

- Just 2 5/8 inches deep, the Dynamax speaker is the slimmest 100 watt speaker available. It's unique, patented design allows it to be installed in many locations on emergency vehicles, including behind the grille and on top of the bumper
- The solid aluminum construction incorporates the driver and projector into the housing, allowing the speaker to operate cooler and run more efficiently than conventional speakers.
- Sleek black finish that enhances corrosion resistance
- One key feature is its light weight, just 5 pounds, making for an easy installation

### MODELS

- MS100-01—100 watt speaker w/ universal bail bracket
- MS100-02—100 watt speaker w/ bracket for 95 to 97 Ford Crown Victoria
- MS100-03—100 watt speaker w/ bracket for 95 to 97 Chevy Lumina
- MS100-04—100 watt speaker w/ bracket for 98 plus Ford Crown Victoria
- MS100-05—100 watt speaker w/ bracket for 98 plus Ford Explorer and Expedition.
- MS100-06—100 watt speaker w/ bracket for 96 to 00 Chevy Tahoe
- MS100-07—100 watt speaker w/ bracket for 00 plus Chevy Impala

### MS100

**\$163.00**

Please specify specific model number.

These units sometimes work well in other vehicle applications. If your vehicle is not listed, when you order, ask which model will work for your vehicle.



## Federal EQ2B

- State-of-the-art EQ2B electronic siren carries the tradition of the classic Q by utilizing digital signal processing technology with a true 200 watts of speaker output to reproduce genuinely and accurately the distinctive Q sound at the fraction of the current amp draw.
- The Digital Output Controller transmits and prioritizes end user commands. Siren functions include the tradition Q wail. Additional features include a Q yelp, and Q brake, digitally recorded air-horns, PA and radio rebroadcast with a detachable microphone with volume control
- Choose from additional options like the externally configured foot switches to operate the Q and air horn functions
- Also choose from a single 200 watt speaker to 2 100 watt speakers
- Current amp draw of only 30 amps

### MODELS

- EQ2B—Siren, 200 watt siren/amplifier, with digital output, control head (purchase speaker system separately)
- BP200-Q—200 Watt speaker w/ classic chrome plated Q grille & back plate
- BP200-EF—200 watt speaker with square Electric F grille / flush mount
- BP100—100 watt speaker



### EQ2B

**\$999.00**

### BP200-Q

**\$658.00**

### BP200-EF

**\$417.00**

## Federal Signal TS100-N

- High power speaker delivers outstanding audible warning performance at an attractive price
- Built with Neodymium, a more efficient driver component, this speaker is 40 % lighter and 1 inch shorter than the old TS-100. This allows greater flexibility in mounting and durability
- Meets all Class A sound level requirements
- Available in single or double driver models for 100 or 200 watt capabilities
- Comes standard with flat mounting bracket. Mounting bracket for the 98 plus Ford Crown Victoria can be purchased separately



### MODELS

- TS100-N—100 Watt speaker with flat mounting bracket
- TSGR-8CV—Mounting Bracket for 98 plus Ford Crown Victoria

### TS100-N

**\$ 99.00**

### TSGR-8CV

**\$ 19.00**


## Federal Signal BP100

- Compact Cast speakers offer high power audible signal and a variety of bracket mounting options to mount virtually anywhere
- Easily accessible driver allows for easy installation and field service
- Unique design projects sound to the front as well as to all side of the vehicle
- Meets Class A standards when used with any Federal Signal Siren
- Available in either a flat black powder coated finish or a high polished stainless steel
- A variety of mounting brackets for any application are available, must be purchased separately

### MODELS

- BP100—100 watt speaker, Black Powder Coated finish
- BPGR—Standard grill mount for BP100
- BPMT—Bumper mount kit, black powder coat
- BPMT-P—Bumper mount kit, polished

### BP100

**\$239.00**

### BPGR

**\$ 18.00**

### BPMT

**\$ 18.00**


## Custom Installations

### Decals

### Sirens

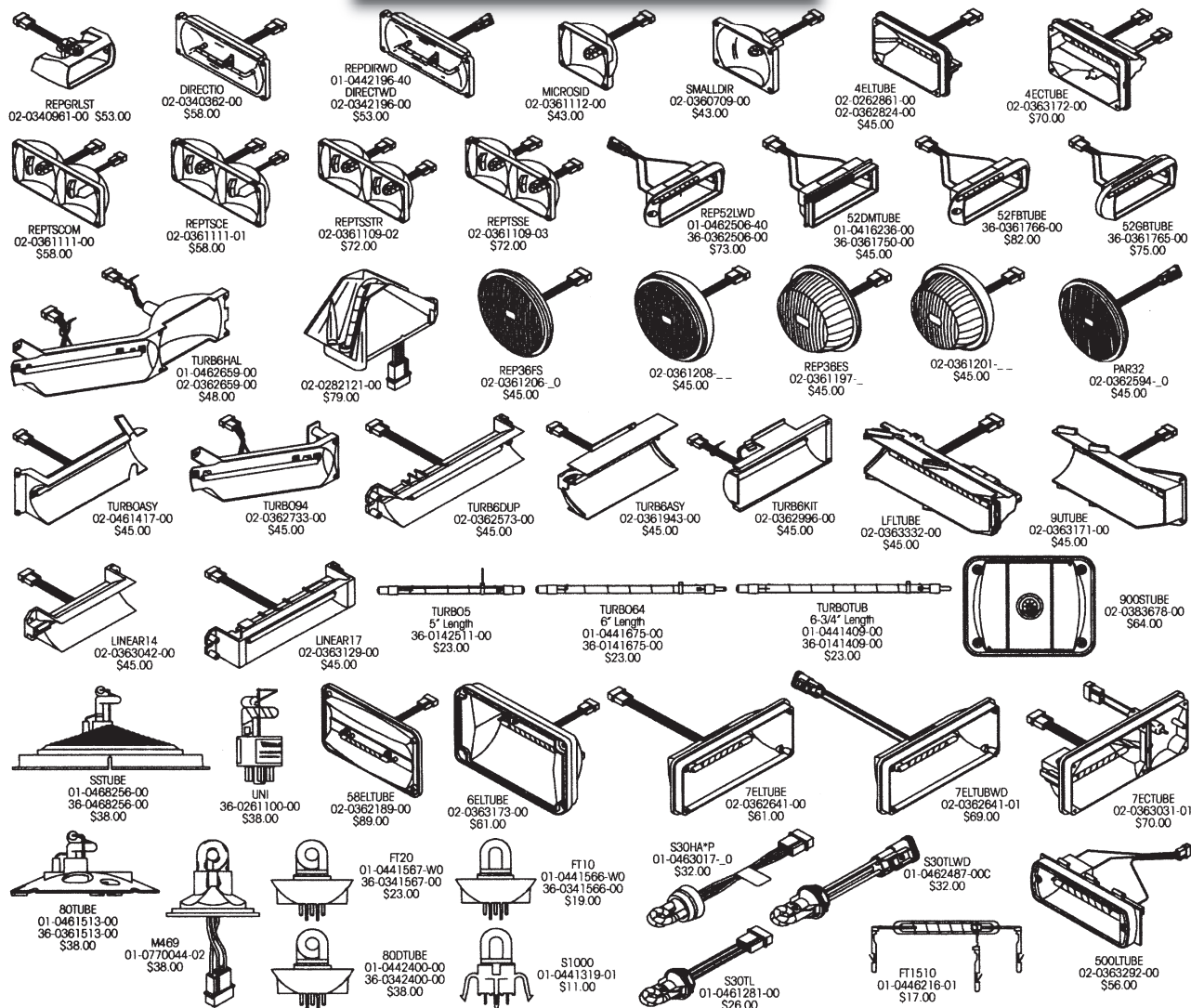
## Custom Light Configurations

### 400,500 and 800 MHz Radios

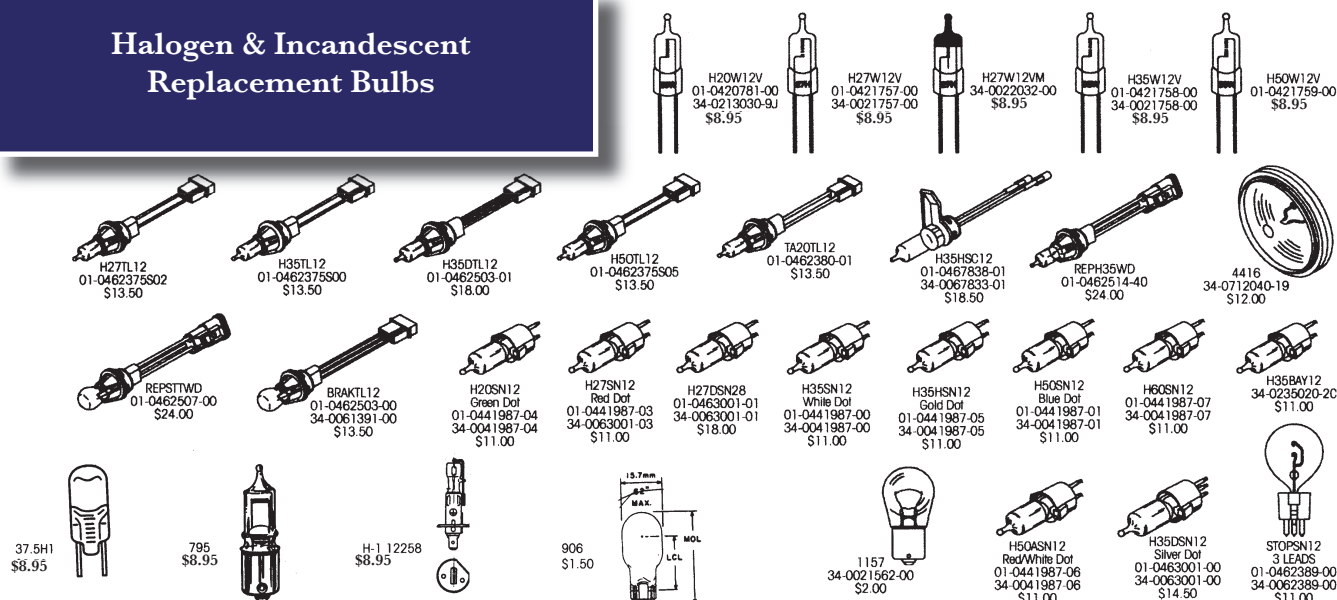
### Mechanical Repairs



## Strobe Replacement Bulbs



## Halogen &amp; Incandescent Replacement Bulbs





**Federal Signal—Signalmaster**

- Optically enhanced, separated lenses distribute light better for high visibility of axis while eliminating light bleed-through
- Enclosed in an extruded aluminum housing designed with hood to block sunlight "washout" and increase warning capability
- Available in different lengths. Low profile design fits snugly basically anywhere
- Order controllers with various options including regular arrow patterns, flash warning, fast flash, dimmer and an auxiliary button

**MODELS**

- SML-8—8 lamp halogen Signalmaster
- SMLED-8—8 lamp LED Signalmaster
- SML6-2DS1—6 lamp halogen Signalmaster with 2 end remote strobes
- SMLED6-2DS1—Same as above in LED controllers (purchased separately)
- SMC-1—Standard controller for SML-8 with arrow patterns and warning flash button
- SMC-16 Standard controller for SML-6 with arrow patterns and warning flash button
- SMC-5—Deluxe controller for SML-8 with standard controls and fast flash, dimmer, and auxiliary button

**ACCESSORIES**

- SML-UM— Universal mounting kit & -SML-LBM—Light bar mounting kit

<b>SML-8</b>	<b>\$169.00</b>
<b>SMLED-8</b>	<b>\$425.00</b>
<b>SML-6 2 DS1</b>	<b>\$259.00</b>
<b>SMLED-6 2 DS1</b>	<b>\$315.00</b>
<b>SMC-1</b>	<b>\$153.00</b>
<b>SMC-16</b>	<b>\$155.00</b>
<b>SMC-5</b>	<b>\$185.00</b>
<b>SML-UM</b>	<b>\$ 44.00</b>
<b>SML-LBM</b>	<b>\$ 22.00</b>

**Code 3 Arrowstik**

- 6, 8, or 10 lamp halogen Arrowstik is housed in a one piece aluminum channel and is available in different lengths and options
- Choose the new LED Narrowstik in the low profile LED X technology
- Includes the standard controller that provides you with 4 arrow patterns and a warning flash, all controlled with a rotary dial and on / off button
- A split model is available for many different applications

**MODELS**

- AS847—8 lamp halogen Arrowstik with standard controller
- NASL847—8 lamp LED Narrowstik with standard controller
- AS10S—10 lamp halogen Arrowstik with standard controller
- AS-EX—Upgrade basic control head to deluxe control head



<b>AS AS-847</b>	<b>\$329.00</b>
<b>NASL847</b>	<b>\$709.00</b>
<b>AS10S</b>	<b>\$365.00</b>
<b>AS AS-EX</b>	<b>\$ 18.00</b>
<b>AS AS-BK1</b>	<b>\$ 19.00</b>

**Whelen Traffic Advisor**

- This versatile series provides a high intensity warning protection in a low profile stand alone unit. Ideal for permanent or magnetic mounting. Placement for rear deck, roof mount or light bar mount
- 6 or 8 500 Series halogen relampable modules draw only 1 1/2 amps to 3 amps depending on operating mode (halogen), and are at least twice as bright as most competitive sized models
- Comes standard with TACTRL1A controller, features include standard arrow flashes, warning flash, and a high low dimmer
- Available in an oval or rectangular extruded aluminum housing the TA series is available in halogen, LED, Strobe, and Halogen Strobe combination

**MODELS**

- TA836A—8 lamp halogen, oval housing, black powder finish, controller
- TA837AMP—6 lamp halogen, 2 end strobes (remote), oval housing, black power finish, controller
- TA837A—8 lamp halogen, rectangular housing, natural finish, controller
- TA852L—8 lamp LED, low profile, extra thin in flat mount, black powder finished housing, controller
- TAMMB—Magnetic Mount Kit for TA836 & 837 Models

<b>TA836A</b>	<b>\$390.00</b>
<b>TA837AMP</b>	<b>\$493.00</b>
<b>TA837A</b>	<b>\$390.00</b>
<b>TA852L</b>	<b>\$618.00</b>
<b>TAMMB</b>	<b>\$ 40.00</b>



**TD92** **\$ 395.00**

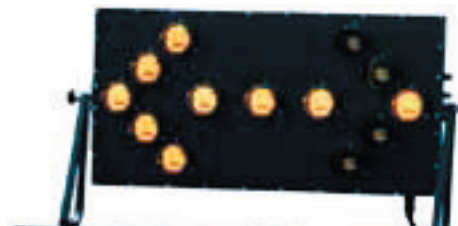
**Star Stick Traffic Director**

- 1.5 inch tall by 1.5 inch deep - 4.15lbs (less cable)
- Mobile, on-site traffic directing LED Stik
- Microprocessor controlled with tactile front
- Modes: left arrow, right arrow, center-out and alternating
- Varying flash patterns: left arrow, right arrow, center-out and alternating
- Extruded aluminum with 1/4 inch mounting grooves on top bottom and back
- Polycarbonate shield
- 12v DC with 2.1 amp draw max
- Standard 15 foot cable
- Standard 37 3/4 inch and 48 inch lengths
- Custom lengths of cable and extrusions available
- TD92: 1 1/2 inch tall by 1 1/2 inch deep, Weight: 10 lbs.
- TD92-2 Control Unit: 6 1/2 inchL X 3 3/4 inch W X 1 1/2 inch H

**Trained Personnel will assist  
you with your orders.  
800.373.6175**

**Superior Signal Traffic Manager**

- 12 volt, arrow board's frame and panels made of sturdy aluminum with a black power painted finish
  - Available in 4 different sizes this arrow board features 13, 15, or 25 lamps and is capable of 90 degrees for travel and moving
  - Each lamp has a 360 degree hood for better focus and less washout during the daytime
  - Standard feature includes a photometric cell for automatic or manual dimming of the lamps
  - Available in a Halogen or LED versions
  - Mounting options and control box features listed below
- MODELS**
- SY3902448/SY3902015—24 x 48 inch unit with 15 Halogen lamps, 4 function control box and a 20 ft harness
  - SY3913060/SY3902025—30 x 60 inch unit with 25 Halogen lamps, 12 function control box and a 20 ft harness
  - SY3913672/SY3902025—36 x 72 inch unit with 25 Halogen lamps, 12 function control box and a 20' harness



SY3902448/SY3902015  
 SY3913060/SY3902025  
 SY3913672/SY3902025  
 Other options like LED lamps,  
 13, 15 or 25 lamp models  
 and longer harnesses are  
 available, call for details and pricing

**Control Boxes**

- Rotary switch for arrow control, power switch, Hi/Lo switch (for photometric sensor), and power lift switch (optional)

**Mounting Kits**

- Slide bar with slide legs for solid roof mounting
- 180 Degree power rotation kit includes side legs, hydraulic pump, and hardware kit.
- Gutter mount kit with slide bar and legs.



Please call 800.373.6175 for additional details and pricing.

**Federal Signal Rocker Switch Panels**

- Choose between models to provide complete control; of either 4 or 6 lighting functions. Encased in a powder paint finished box these 4 or 6 switch panels are durable and ready to install out of the box
- Utilizing Single Pole Single Throw illuminated switches these units are prewired with switch one to a 40 amp circuit breaker and relay, and the other switches are wired to 20 amp fuses. Connect them to pre-wired harness for quick and easy installation
- User selectable legends are backlit for night visibility

**MODELS**

- SW200—4 SPST switch panels with illuminated legends and wire harness
- SW300—6 SPST switch panels with illuminated legends and wire harness
- SWBK—Bail mounting bracket for SW300 (purchased separately)
- SWBK1—Bail mounting bracket for SW200 (purchased separately)

SW200	\$ 95.00
SW300	\$115.00
SWBK	\$ 8.00
SWBK1	\$ 8.00

**Able 2 Switch Panels 6040—8040**

- Choose between models to provide complete control of 6 or 8 separate lighting functions. Encased in a powder paint finished box these four or six switch panels are durable and ready to install out of the box
- Utilizing Single Pole Single Throw illuminated switches these units are prewired with switch one to a 40 amp circuit breaker and relay, and the other switches are wired to 20 amp fuses. Connect them to pre-wired harness for quick and easy installation
- User selectable legends are backlit for night visibility—bail bracket mount is included

**MODELS**

- 05.6040—6 SPST switch panel with illuminated legends and wire harness
- 05.8040—8 SPST switch panel with illuminated legends and wire harness

05.6040	\$109.00
05.8040	\$195.00

**Federal Signal Rocker / Slide Switch Panels**

- Choose between models to provide complete control of 7 separate or auxiliary lighting functions
- Three level progressive slide switch and 4 single pole single throw switches or 3 SPST switches and one dual momentary switch for use with Smart Vector control options. The slide switch is run through 40 amp relay and circuit breaker and the auxiliary switches are fused with automotive blade fuses accessible from the back of the housing
- User selectable legends are backlit for night visibility

**MODELS**

- SW400SS—3 position slide switch with 4 auxiliary SPST switches
- SW400SSJ—3 position slide switch with 1 dual momentary switch and 3 SPST switches
- SWBK—Bail mounting bracket for either unit (purchased separately)

SW400SS	\$149.00
SW400SSJ	\$149.00
SWBK	\$ 8.00

**Able 2 Rocker / Slide Switch Panels**

- Choose between models to provide complete control of 7 or 9 separate or auxiliary lighting functions
- Three level progressive slide switch and 4 or 6 single pole single throw switches
- The slide switch is run through 40 amp relay and circuit breaker and the auxiliary switches are fused with automotive blade fuses accessible from the back of the housing. Bail bracket is included
- User selectable legends are backlit for night visibility

**MODELS**

- 05.5540—3 position slide switch with 4 auxiliary SPST switches
- 05.5560—3 position slide switch, with 1 dual momentary switch and 3 SPST switches

05.5540	\$185.00
05.5560	\$229.00

**Code 3 Switch Panels**

- Choose between models to provide complete control; of 6 lighting functions or 3 level slide switch and 5 auxiliary switches. Encased in a powder paint finished box this 6 switch panel is durable and ready to install out of the box
- Utilizing Single Pole Single Throw illuminated switches these units are pre-wired with switch one to a 40 amp circuit breaker and relay, and the other switches are wired to 20 amp fuses. Connect them to pre-wired harness for quick and easy installation
- Choose the model with the 3 level progressive slide switch and 5 auxiliary switches—Slide switch is protected by an internal circuit breaker and relay while the 5 auxiliary switches are fused with 20 amp circuits
- User selectable legends are backlit for night visibility

**MODELS**

- 430—6 Switch control box includes wires and bail brackets
- 440L5—3 level slide switch and 5 auxiliary switches

430	\$145.00
440L5	\$160.00

**Able 2 Economy Switch Panel**

- Multiple styles and sizes, these units use single pole single throw illuminated switches in 15 amp and 25 amp rating. Order with or without a cover; the housing contains a pre-wired fuse-block and includes extension wire and switch label stickers. Includes screws for under dash or side mounting

**MODELS**

- 05.311—One 25 amp SPST switch and two 15 amp SPST switches
- 05.311.COV—same as above with cover
- 05.3111—One 25 amp SPST switch and three 15 amp SPST switches
- 05.3111.COV—same as above with cover
- 05.31111—One 25 amp SPST switch and four 15 amp SPST switches
- 05.31111.COV—same as above with cover
- 05.311111—One 25 amp SPST switch and five 15 amp SPST switches
- 05.311111.COV—same as above with cover



05.311	\$45.00
05.311.COV	\$50.00
05.3111	\$55.00
05.3111.COV	\$60.00
05.31111	\$65.00
05.31111.COV	\$70.00
05.311111	\$75.00
05.311111.COV	\$80.00



### Streamlight SL Series SL SL-20X

- Made of machined aluminum anodized against corrosion inside and out, with an unbreakable polycarbonate lens. It measures 13 inches in length
- 6 volt, nickel-cadmium, 2.4 amp, 1/2 D battery that is rechargeable up to 1000 times
- 10 watt, hard glass halogen pre-focused bulb with spun reflector that produces up to 30,000 candlepower
- 1.5 hours of continuous use between charges
- Charging sleeves are available in 12 volt DC (vehicle), 120 volt AC (home) or both
- Available in black aluminum only

### SL SL-20XP

- Made up of lightweight super tough polymer with non-slip, no-absorbent closed cell foam comfort grip with an unbreakable polycarbonate lens It measure 13 inches in length
- 6 volt, Nickel-cadmium, 1.8 amp, sub-C battery that is rechargeable up to 1000 times
- 8 or 3 watt, hard glass halogen pre-focused bulb w/ spun reflector that produces up to 8,000 candlepower (3 watt bulb) and up to 25,000 candle power (8 watt bulb)
- 1.5 hours of continuous use between charges (8 watt bulb) 3.75 hours of continuous use between charges (3 watt bulb)
- Charging sleeves are available in 12 volt DC (vehicle), 120 volt AC (home), or both
- Available in Black, Orange or Yellow

### SL35X

- Same construction as SL-20X but with a 6 volt, nickel-cadmium, 5 amp, full D rechargeable battery , 20 watt bulb, up to 40,000 candlepower and 1.5 hours of continuous use. It measures 17.5 inches in length
- Available in Black aluminum only



Model	Charger Style	Price
SL-20X	12 Volt DC	\$ 99.00
SL-20X	120 Volt AC	\$105.00
SL-20X	Both	\$110.00
SL-20XP	12 Volt DC	\$ 89.00
SL-20XP	120 volt AC	\$ 95.00
SL-20XP	Both	\$ 99.00
SL-35X	12 volt DC	\$137.00
SL-35X	120 volt AC	\$143.00
SL-35X	Both	\$151.00

Please specify color of SL-20XP



### Streamlight Stinger Series Stinger & Stinger XT

- Made of machined aluminum anodized against corrosion inside and out, with an unbreakable polycarbonate lens It measures 7.4 inches in length—XT model features tail cap mounted on/off switch and non-slip rubber grip
- 3.6 volt, nickel-cadmium, 1.8 amp, sub-C battery that is rechargeable up to 1000 times with 1 hour of continuous use between charges
- 6 watt, xenon gas filled bi-pin bulb produces up to 15,000 candlepower—Spare bulb is included with standard Stinger, not the Stinger XT
- Charging sleeves are available in 12 volt DC (vehicle), 120 volt AC (home) or both
- Available in black aluminum only

### Poly-Stinger

- Made up of super tough, non-conductive nylon polymer with a non-slip rubber grip with an unbreakable polycarbonate lens. It measures 7.4 inches in length
- 3.6 volt, nickel-cadmium, 1.8 amp, sub-C battery that is rechargeable up to 1000 times with 1 hour of continuous use between charges
- 6 watt, xenon gas filled bi-pin bulb produces up to 15,000 candlepower—Spare bulb is included in tail cap
- Charging sleeves are available in 12 volt DC (vehicle), 120 volt AC (home), or both
- Available in Black, Yellow or Olive Drab

### Ultra-Stinger

- Made of machined aluminum anodized against corrosion inside and out, with an unbreakable polycarbonate lens. It measures 11.75 inches in length—XT model features tail cap mounted on/off switch and non-slip rubber grip
- 6 volt, nickel cadmium, 1.8 amp, sub-C rechargeable battery that is rechargeable up to 1000 times with 1 hour of continuous use between charges
- 10 watt xenon-halogen gas filled bi-pin bulb produces up to 75,000 candle power
- Charging sleeves are available in 12 volt DC (vehicle), 120 volt AC (home) or both
- Available in Black aluminum only

Model	Charger Style	Price
Stinger	12 Volt DC	\$ 79.00
Stinger	120 Volt AC	\$ 85.00
Stinger	Both	\$ 99.00
Stinger XT	12 Volt DC	\$ 79.00
Stinger XT	12 Volt AC	\$ 85.00
Stinger XT	Both	\$ 97.00
Stinger HP	12 volt DC	\$ 76.00
Stinger HP	12 volt AC	\$ 82.00
Stinger HP	Both	\$ 94.00
Poly-Stinger	12 Volt DC	\$ 75.00
Poly-Stinger	120 volt AC	\$ 79.00
Poly-Stinger	Both	\$ 85.00
Ultra-Stinger	12 volt DC	\$ 82.00
Ultra-Stinger	120 volt AC	\$ 88.00
Ultra-Stinger	Both	\$ 99.00

Please specify color when ordering

**Streamlight LiteBox / Vulcan Litebox**

- Made of high impact ABS thermoplastic housing, rubberized impact bumper, lens ring and cushion grip handle
- 6 volt, 10 amp, sealed lead acid battery, rechargeable up to 500 times
- High intensity halogen 8 or 20 watt spot or flood, PAR 36 bulb that produces up to 50,000 (8 watt spot), 550 (8 watt flood) 70,000 (20 watt spot) 1,400 (20 watt flood) candlepower
- Continuous run time between charges is 8 hours (8 watt) and 3.5 hours (20 watt)
- Comes standard with mounting base and 12 volt and 120 volt charging plug or the Direct wire DC
- Available in Yellow or Orange

**Vulcan**

- Made of high impact, waterproof, ABS thermoplastic housing with cushioned grip handle
- 6 volt, 4.5 amp, sealed lead acid, rechargeable up to 500 times
- High intensity halogen 3 or 8 watt spot, par 36
- Continuous use between charges is 9 hours (3 watt) or 3.1 hours (8 watt)
- Comes standard with mounting base with 12 volt and 120 volt charging plugs or the Direct wire DC
- Available in Yellow or Olive Drab

2AA	\$15.00
4AA	\$20.00
3C	\$25.00
Please specify color	

**Streamlight Pro-Polymer**

- All models are made of shock resistant, engineering grade polymer case with thermoplastic elastomer grip; unbreakable polycarbonate lens
- All models use alkaline batteries— 2 AA, 4 AA and 3 C, each light comes with batteries except 3C.
- All three models utilize a high-intensity xenon gas filled bi-pin bulb the produces up to 3,500 (2AA), 6,000 (4AA) and 12,000 (3C) candlepower respectively
- Continuous use between charges ranges per model the 2AA and 4 AA run up to 4 hours and the 3C operates at up to 5.5 hours
- Other features include waterproof to 200 feet, dual switches (head and tail cap); Non-conductive and corrosion proof—3C and 2AA feature a belt clip
- Available in Black, Yellow or Olive Drab

**Streamlight Scorpion**

- Machined aluminum housing covered by a rubber armored sleeve for a sure fire grip; unbreakable polycarbonate grip
- Powered by two, 3 Volt lithium batteries (included) with a shelf life of nearly ten years
- Xenon- gas filled bi-pin bulb that produces up to 6,500 candle power
- One hour of continuous use between battery change
- Other features include a triple action tail cap switch, variable spot to flood focus; spare bulb included

**Scorpion \$38.00****Streamlight Junior**

- Machined aluminum housing with anodized finish, shock and water resistant, unbreakable polycarbonate lens
- Powered by (2) AA alkaline batteries—included
- Midget flange based bulb
- Other features include a push button tail cap

**Streamlight Syclone**

- Chemical resistant, blended polymer case Unbreakable polycarbonate "O" ring sealed
- Powered by 4 AA Alkaline batteries (included) or a 4.8 volt Nickel-Metal hydride battery that is rechargeable up to 1000 times
- 2.2 watt T-1 3/4 Krypton gas filled bi-pin bulb (primary) and an Ultra bright T-3 Amber LED draws 50 mA—Krypton bulb has up to 6,000 Candlepower
- Continuous use of 3.5 hours (4 AA) or 2.5 hours (rechargeable) with Krypton bulb and up to 72 hours (4 AA) or 32 hours (rechargeable) with Amber LED
- Other features include waterproof up to 100 ft, articulating head, rubber comfort grip on body and face cap with rotating clip—Rechargeable unit comes with either 12v DC, 120v DC chargers or both
- Available in Yellow or Olive Drab



Lite Lite-box	Standard	\$105.00
	DC Direct wire	\$ 99.00
Vulcan	Standard	\$ 85.00
	DC Direct Wire	\$ 78.00
Please specify color		

**Survivor \$100.00**  
Please specify color

**Streamlight Survivor**

- Made from high impact, super tough nylon and is "O" ring sealed; unbreakable polycarbonate lens; two position rotary switch is "O" ring sealed
- 4.8 volt, 1.6 amp, sub-C, nickel cadmium battery rechargeable up to 1,000 times
- 5.3 watt pre-focused black dot xenon bulb with machined aluminum reflector and produces up to 15,000 candlepower
- Continuous use between charges is 1.5 hours
- Comes standard with both 12 v DC & 120v DC chargers that are FM approved for use in hazardous (classified) locations, Class I, II, III, Division 2
- Available in Orange or Yellow

**Junior \$12.00**



Model	Charger Style	Price
Syclone	Dual Chargers	\$79.00
Syclone	4 AA Alkaline	\$29.00
Please specify color when ordering		



**Streamlight TopSpot**

- Made of rugged, shock resistant polymer; unbreakable polycarbonate lens
- Powered by 4 AA alkaline batteries—Included
- 5.2 volt krypton filled bulb with spare
- Continuous run time of up to 4.5 hours with krypton bulb
- Other features are convertible flashlight/headlamp; 45 degree tilting head; compound locking on/off switch; spot to flood beam

**Top Spot \$23.00**  
Please specify color.

**Streamlight Stylus**

- Made from 6000 series tempered aircraft aluminum with anodized finish; non-slip knurled grip
- Available in two sizes, powered by either 2 or 3 AAAA alkaline batteries are included
- One 100,000 hour lifetime, high-intensity Light Emitting Diode (LED) - 2 AAAA is available in Blaze Orange or Flame Red, 3 AAAA is available in Arctic White, Ice Blue or Navigation Green
- Continuous runtime of 10 + hours
- Other features include waterproof; individually serialized; momentary "blink" switch and constant on; pocket clip—Optional glare guard sleeve
- Available in Silver, Gold, or Black anodized finishes

**Stylus 2 Cell \$13.00**  
**Stylus 3 Cell \$16.00**  
Please specify color

**Streamlight WOW**

- Made from shock resistant polymer; unbreakable polycarbonate lens
- Powered by 2 AA alkaline batteries—Included
- 2.4 volt Krypton KPR-104 bulb
- Continuous run time of up to 3.5 hours
- Other features include convertible flashlight/headlamp; 180 degree tilting head; large rotary switch
- Available in Yellow or Olive Drab

**WOW \$9.00**  
Please specify color

**Streamlight Baton Lite**

- Made of anodized machined aircraft aluminum with knurled grip; unbreakable Lexan lens
- Powered by 3 N Size alkaline batteries—included
- Three 100,000 hour high-intensity Light Emitting Diodes (LED's) that produces 42,000 millicandelas
- Continuous run time between battery changes is 12+ hours
- Other features include a swiveling key ring collar with key ring; momentary "blink" button and locked "on" switching; "O" ring sealed

**Baton Baton-Lite \$33.00**

**Streamlight Cuff Mate**

- Made from indestructible fiberglass-reinforced polymer body; alloy steel key and double lock pin
- Powered by 2 replaceable CR2016 lithium batteries—Included
- One 100,000 hour lifetime, high intensity Light Emitting Diode (LED) that produces 10,000 millicandelas
- Continuous run time between battery changes is 12 + hours
- Other features include a swiveling key ring connector with key ring; double lock pin; momentary "squeeze" switch

**Cuff Cuff-Mate \$13.00**





**Pelican Computer & Attaché Case**

- Made of Ultra high impact structural copolymer polypropylene
- Call for features and options

1490CC2 Standard Case	\$169.00
1490CC1 Deluxe Case	\$192.00
1470AC Attaché Case	\$162.00
All cases come with Pelican's unconditional lifetime guarantee.	

**Pelican Rifle Cases**

- Made of Ultra high impact structural copolymer polypropylene
- Call for features and options

**MODELS**

- 1700—38 7/16"L x 17 9/16"W x 6 1/4"D, includes wheels & fold down handle
- 1750—52 7/8"L x 17 1/2" W x 6" D, includes wheels & fold down handle

1700	\$194.00
1750	\$222.00
All cases come with Pelican's unconditional lifetime guarantee	

**Pelican Protector Cases**

- Made of Ultra high impact structural copolymer polypropylene
- Call for features and options

**MODELS**

- 1120—8 1/4"L x 6 9/16"W x 3 5/8"D—Outside dimensions with Pick & Pluck Foam
- 1400—13 3/8"L x 11 11/16"W x 6 1/16"D—outside dimensions with pick & pluck foam
- 1624—24 3/8"L x 19 7/16 x 14"D—outside dimensions with padded dividers

1120	\$ 24.00
1400	\$ 76.00
1624	\$362.00
Please specify color.	

**Havis Shields C-Series Consolidator**

- Made with a combination of machined & extruded aluminum for strength and versatility
  - Includes heavy duty steel humpmount bracket for easy No-Holes mounting (most applications)
  - Aluminum equipment brackets, and filler plates are included (quantity varies )to fill the console
  - Available in a variety of sizes. Choose from 8 to 30 inch custom consoles
  - Choose from a variety of accessories such as cup holders, microphone clips and map lights to customize the usage to your standards
- MODELS**
- C-1200—12" enclosed console, mounting bracket and up to (3) equipment brackets, and up to (3)

C-1200	\$153.00
--------	----------

### Havis Angled Consoles

- Angled series, enclosed consoles are designed for vehicles with bench seat applications and have 2 heights for either cars, trucks or SUV's.
- Use in conjunction with C series console with Trak mount and have versatile and unique console with plenty of room.
- available with 8 or 9 inches of room.
- Choose from a variety of options such as cup holders, microphone clips or map lights to customize according to your needs.

#### MODELS

C-800-8D-8 inch console with 8 inch depth, includes hardware, up to 3 equipment brackets and 3 filler plates.

**C-800-8D \$108.00**



**On-premise custom installation**

### Havis Computer Mounts



- The TCB series (telescoping computer bases) features rotating swivel arms which allow the computer or MDT to be positioned toward the driver or passenger side of the vehicle. Most applications use existing vehicles seat mounting bolts for easy installation
- C-TCB-1—Fits 1995-2001 Chevy Caprice, Lumina, or Crown Victoria
- C-TCB-5—Fits 1997 & up Ford Expedition
- C-TCB-10—Fits 1997 & up Ford Taurus
- C-TCB-21—Fits 1998 & up Dodge Durango
- C-TCB-22—Fits 2000 & up Chevy Impala
- C-TCB-23—Fits 2000 & up Chevy Tahoe, Suburban, & Silverado
- C-TCB-24—Fits 2000 & up Ford Excursion
- C-TCB-26—Fits 2002 Ford Explorer
- C-3075-3—Swivel and tilt, low profile, fixed 2.5 inch high computer mounting bracket

C-TCB TCB-1	\$113.00
C-TCB TCB-5	\$135.00
C-TCB TCB-10	\$135.00
C-TCB TCB-21	\$135.00
C-TCB TCB-22	\$135.00
C-TCB TCB-23	\$135.00
C-TCB TCB-24	\$135.00
C-TCB TCB-26	\$135.00
C-3075 3075-3	\$ 50.00
C-3090 3090-3	\$158.00
Please specify vehicle make and model	

**Above products are only a small number of the hundreds of Havis Shields products we carry. Please call for the options which will address your specific needs.**

**And remember...**

**We offer complete installation and maintenance of every Havis Shield product we sell !**